

Revenue



Electronic Manifest System
IEA Customs and Trade Seminar
25th October 2011



Introduction

Tom McGrath
Electronic Customs Branch
Revenue Commissioners
Nenagh



Electronic Customs Systems

- Import Control System - pre-arrival declaration for safety and security purposes
- AEP – electronic processing of import and export declarations
- ECS – electronic communications between MS for indirect exports
- Manifest – currently paper-based. Missing link in the electronic customs infrastructure



Electronic Manifest System - Introduction

- Purpose
 - Electronically receive detailed cargo manifests
 - Electronically receive arrival information for cargo ships and aircraft



Legislative Basis

- Currently, Community Customs Code (Regulation 2913/1992) and its Implementing Provisions (Regulation 2454/1993), as amended.
- Modernised Customs Code (Regulation 450/2008) and its Implementing Provisions.
 - MCC provides that Arrival Notification, Presentation Notification and Declaration for Temporary Storage are lodged electronically, each with its own set of data items. The introduction of an Electronic Manifest System will cater for all of these declarations in one, thus eliminating the need for Trade to file multiple declarations.



Imports

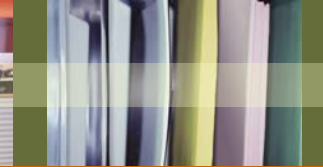
- Manifest will be required to be lodged at latest at the time of arrival of ship or aircraft.
- If a declaration for safety and security purposes (ICS – entry summary declaration, known as an ENS) has previously been lodged, the ENS will be used as the Manifest, thus eliminating the need to file a further declaration.



Imports

- Where Manifest contains consolidated/groupage consignments, a sub-manifest will be required
- A Manifest will be required to contain an agreed set of data items
 - List of data items as follows:

Note: As data sets under MCC have not yet been finalised this list is a draft list only at this stage.



Data Items on the Manifest

- Group 1 – Message Information (including procedure codes)
- Group 2 – References of messages, documents, certificates and authorisations
- Group 3 – Parties
- Group 4 – Valuation Information / Taxes
- Group 5 – Dates / Times / Periods / Places / Countries / Regions
- Group 6 – Goods Identification
- Group 7 – Transport Information (modes, means and equipment)



Data Items on the Manifest (Contd)

- Group 1 – Declaration Type, Goods Item Number, Total Number of Items, Signature, Specific Circumstance Indicator, Customs Status
- Group 2 – Previous Document, Transport Document Number, Reference Number/UCRN
- Group 3 – Consignor/EORI, Consignee/EORI, Declarant/EORI, Carrier / Person Lodging ENS, Simplified Procedures
- Group 4 – Valuation of Goods, Transport Charges Method of Payment
- Group 5 – Country of Dispatch/ Export, Countries of Routing, Actual/Estimated Date and Time of Arrival, Actual Date and Time of Departure, Declaration Date, Declaration Place, Place of Loading, Place of Unloading, Location of Goods
- Group 6 – Gross Mass, Description of Goods, Commodity Code, Type of Packages, Number of Packages, Shipping Marks, UN Dangerous Goods Code
- Group 7 – Container Number, Conveyance Reference Number, Mode of Transport at the Border, Seal Number, Cargo Remaining on Board Indicator, Transhipment Indicator, Any further data



Imports (contd.)

- Manifest will be subject to the following standard checks:
 - Basic validation.
 - Correctness checking.
 - Application of business rules/cross-field checking.
 - Validation of Trader Identification Numbers.



Imports (contd.)

- Following validation, each Manifest will be assigned a unique Manifest Number and the Manifest will be **registered**.
- Manifest will be **accepted** on receipt of Notification of Arrival of Means of Transport.
- Manifest may be **amended** up to the time of acceptance.



Quality of Data

- Quality of data in both SAD and Manifest of utmost importance.
- Current procedure whereby SADs are released when ETA is reached will discontinue.
- SADs will be released when a manifest, containing the matching data in the SAD, has been lodged and notification of arrival of vessel/aircraft has been received.
- Inability to cross-check data will lead to delays in releasing goods



Exports

- Manifest will be required for Air and Sea and will be subject to same validations etc as import Manifest
- Export Manifest will be required to be lodged within 24 hours of departure
- Export declarations automatically written-off against Manifest (as for imports)
- Interface to ECS to allow electronic confirmation of exit where Ireland is office of exit for indirect exports.



Sharing of Data

- Arrival information for vessels/aircrafts will be electronically received from DAA and SafeSeasIreland – no requirement for arrival notification message from Trader
- Manifest information will be electronically shared with other relevant Government Agencies e.g. Dept. of Agriculture – no requirement for paper-based manifests to be provided by Trader to these Agencies



Benefits of Electronic Manifest System

- Elimination of time and cost in producing paper versions of manifest
- Auto discharge of Customs Declarations against manifest – no end of month reports by Traders to Customs stations
- Discrepancy Reports will be issued by Customs
- In line with EU requirements
- Smoother flow of legitimate traffic



Implementation Timescale

- Planned for 1st half of 2013 – but dependent on progress at EU level on MCC
- Trader Specifications available by mid 2012
- Public Interface Test for full end to end testing will be made available
- Ongoing liaison with Customs Consultative Committee and with Software Providers
- Trade and Staff Workshops/Seminars early 2013
- Phased Implementation planned

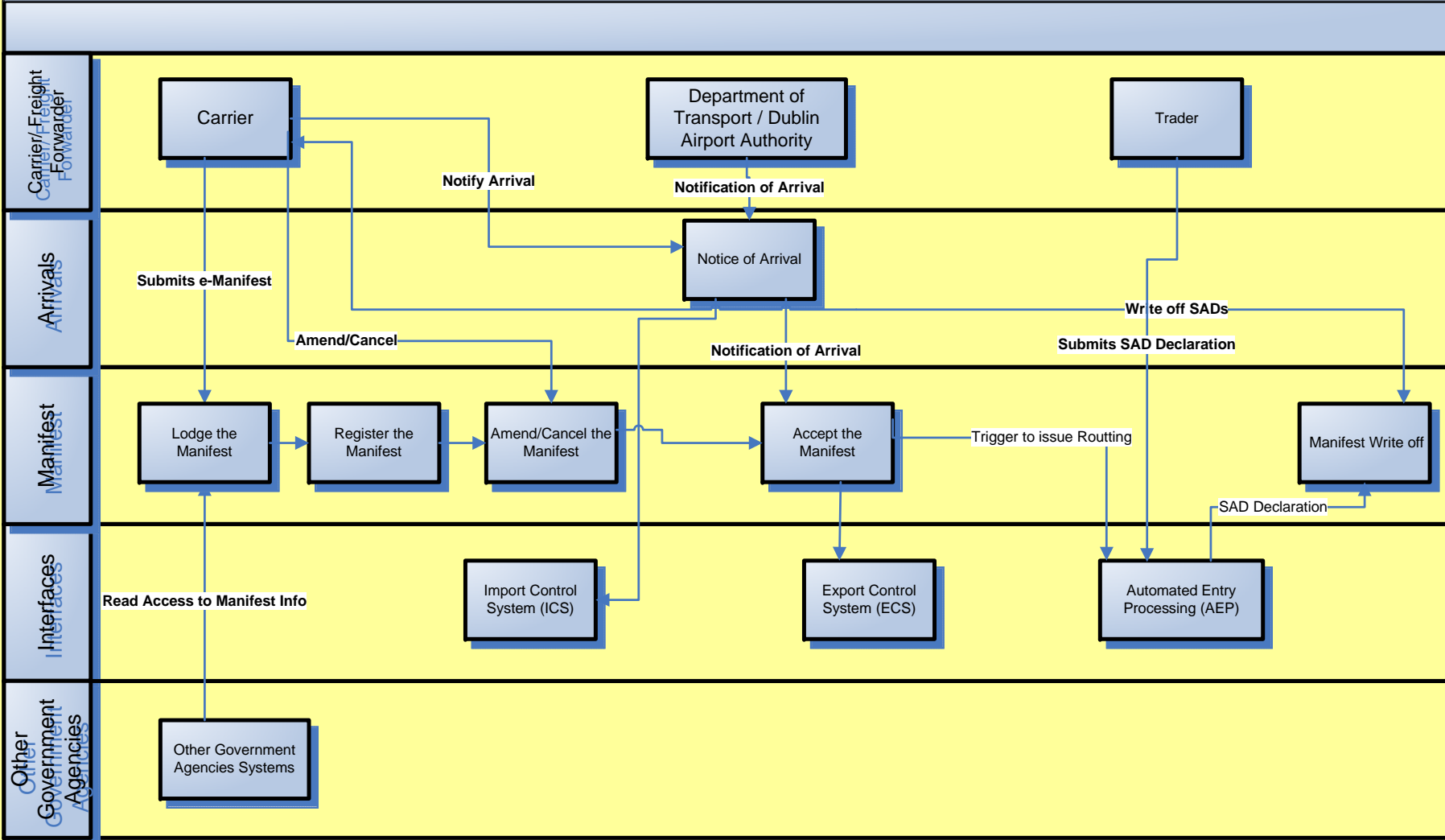


Further Information

- Consultation Document available at – <http://www.revenue.ie/en/customs/ecustoms/electronic-manifest-system.html>
- Queries to: ecustomshelp@revenue.ie



High Level Business Process Diagram for the Electronic Manifest System



Revenue



Any Questions?