

ROS Offline (Windows)

The following installation instructions are specific to Windows computers.

Go to the [ROS Offline Installation](#) page. Under the Windows option, click the "**Download**" link.

Install the ROS Offline Application

To install the ROS Offline Application on your computer, follow the instructions for your operating system below.

Windows

Click on the link below to download the ROS Offline Application installer. Once it has downloaded, double-click on **install.exe**. This will start the installation routine which will install the ROS Offline Application onto your PC.

>> [Download](#) <<

Mac OS X

Click on the link below to download the ROS Offline Application installer. Once it has downloaded, double-click on **install**. This will start the installation routine which will install the ROS Offline Application onto your Mac.

>> [Download](#) <<

If you use **Mozilla Firefox** or **Google Chrome**, the file "install.exe" will be saved to your Downloads folder. Locate this file in your Downloads folder and double click on it to install the ROS Offline Application.

If you have downloaded the file more than once, there may be a digit in the file name, e.g. install(1).exe - in this case, double click on the one with the highest number.

If you cannot find your downloads folder then press "**Ctrl**" and "**J**" to display a list of recently downloaded files.

If you are using **Internet Explorer** the following prompt should then appear:



Click "**Run**" to download the ROS Offline installer file.

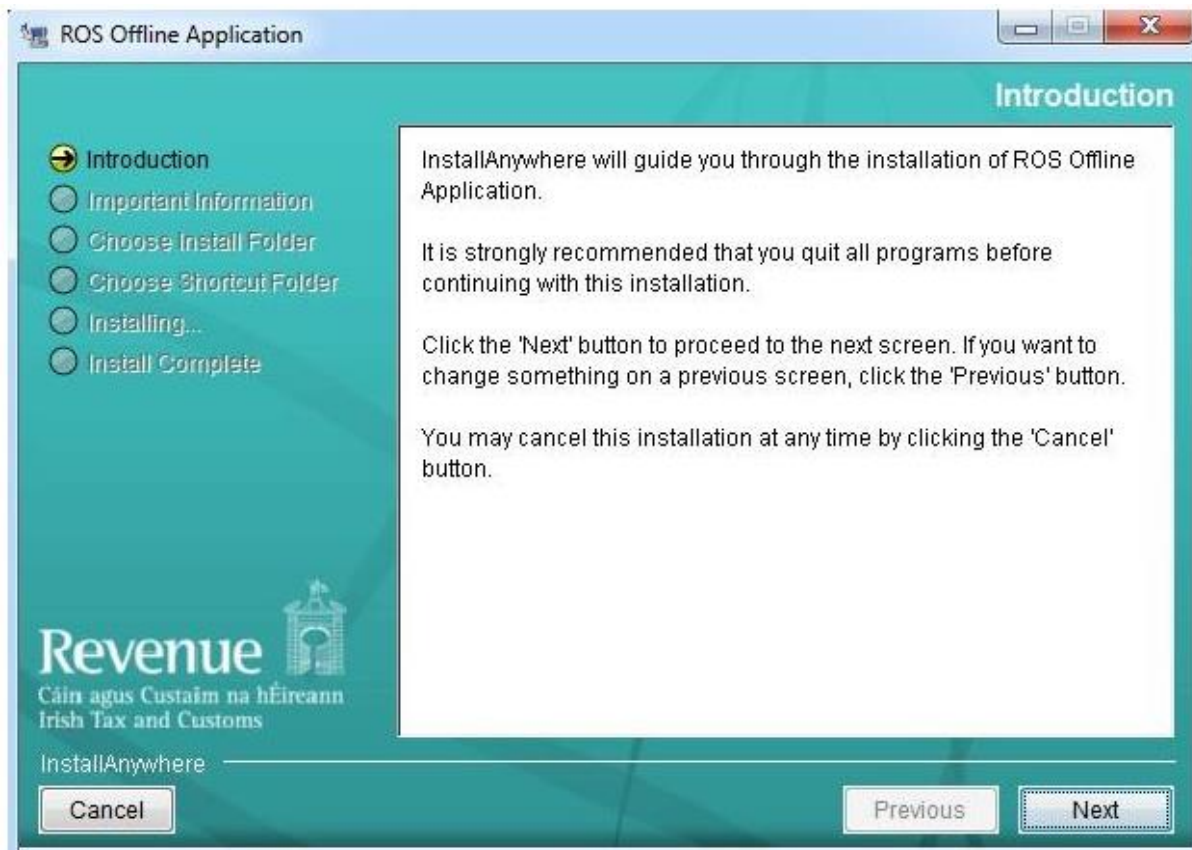
Depending on the version of Windows OS you are using you may get one of the following security prompts:



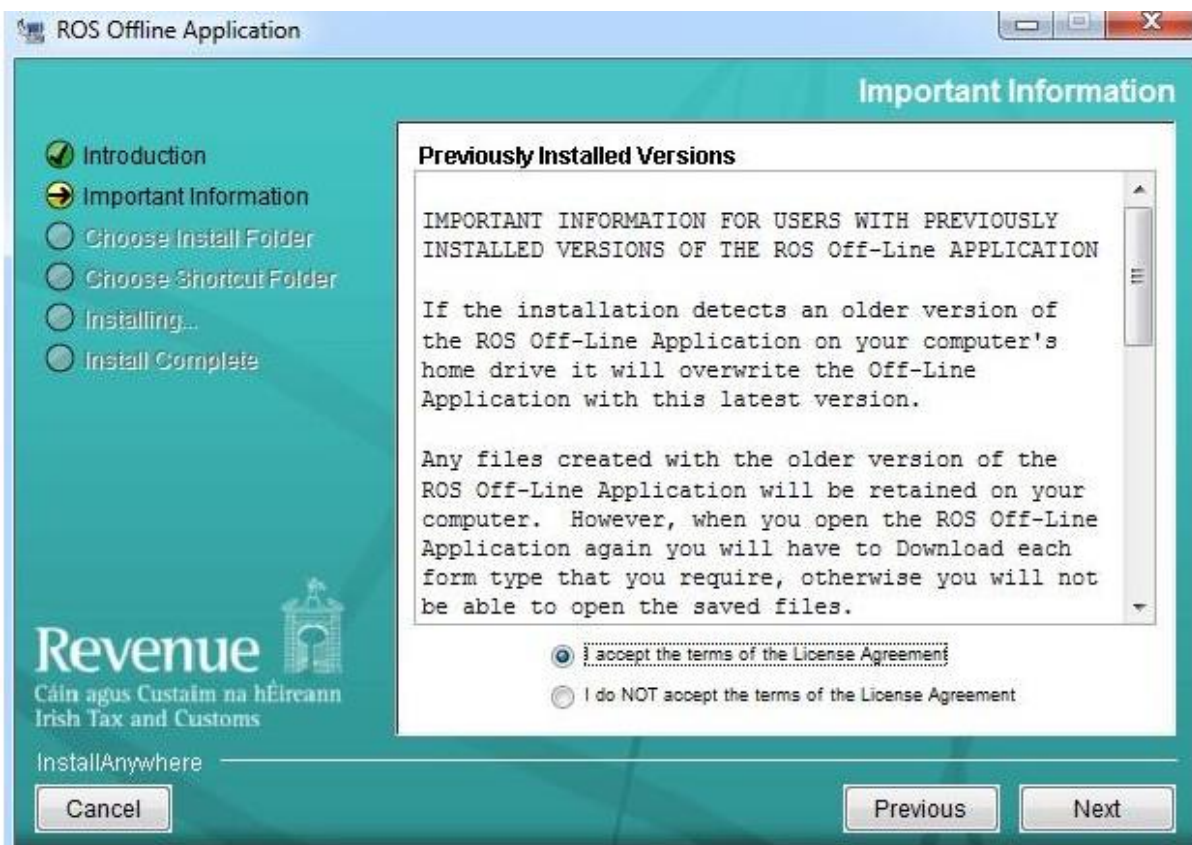
Click "**Run**" or "**Yes**" to verify the installer file (install.exe) and the ROS installation will begin.



On the Introduction screen click "Next".

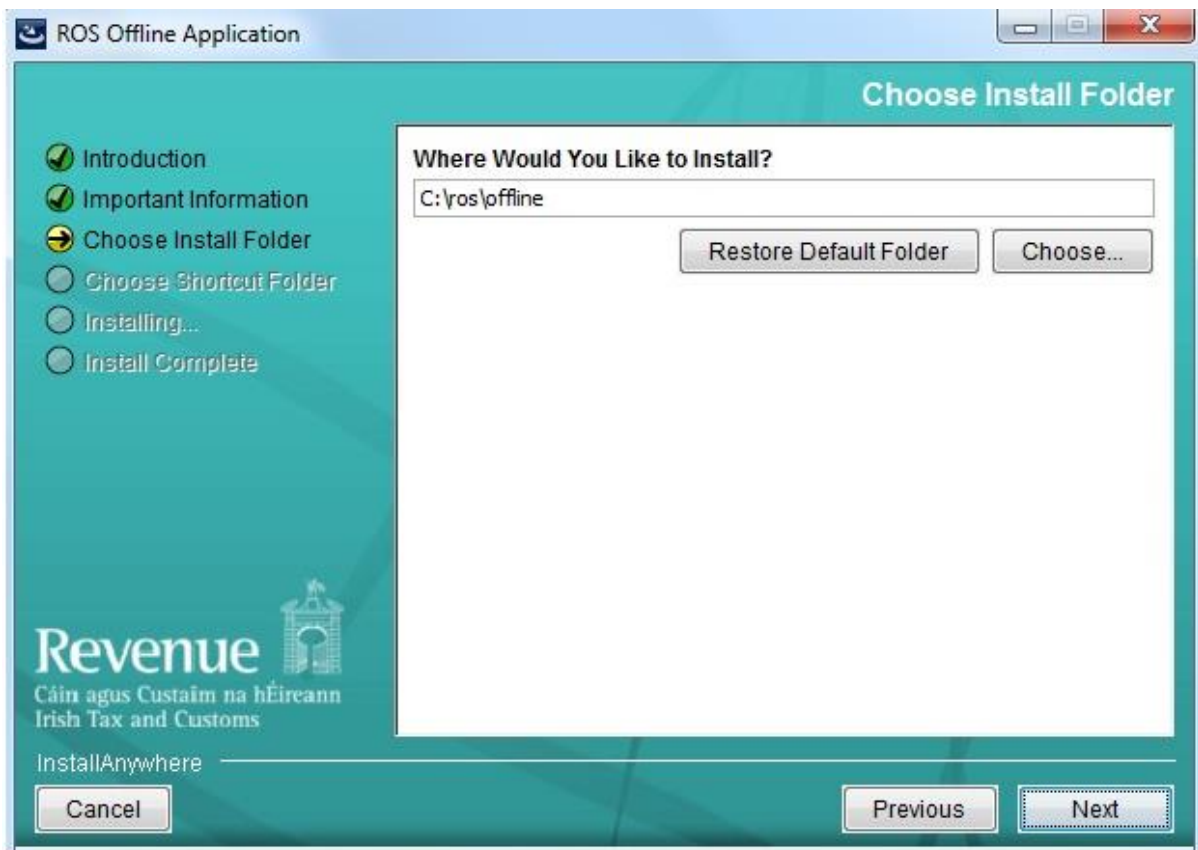


On the Important Information screen review the Licence Agreement and click "I accept the terms and conditions of the Licence Agreement" then click "Next".

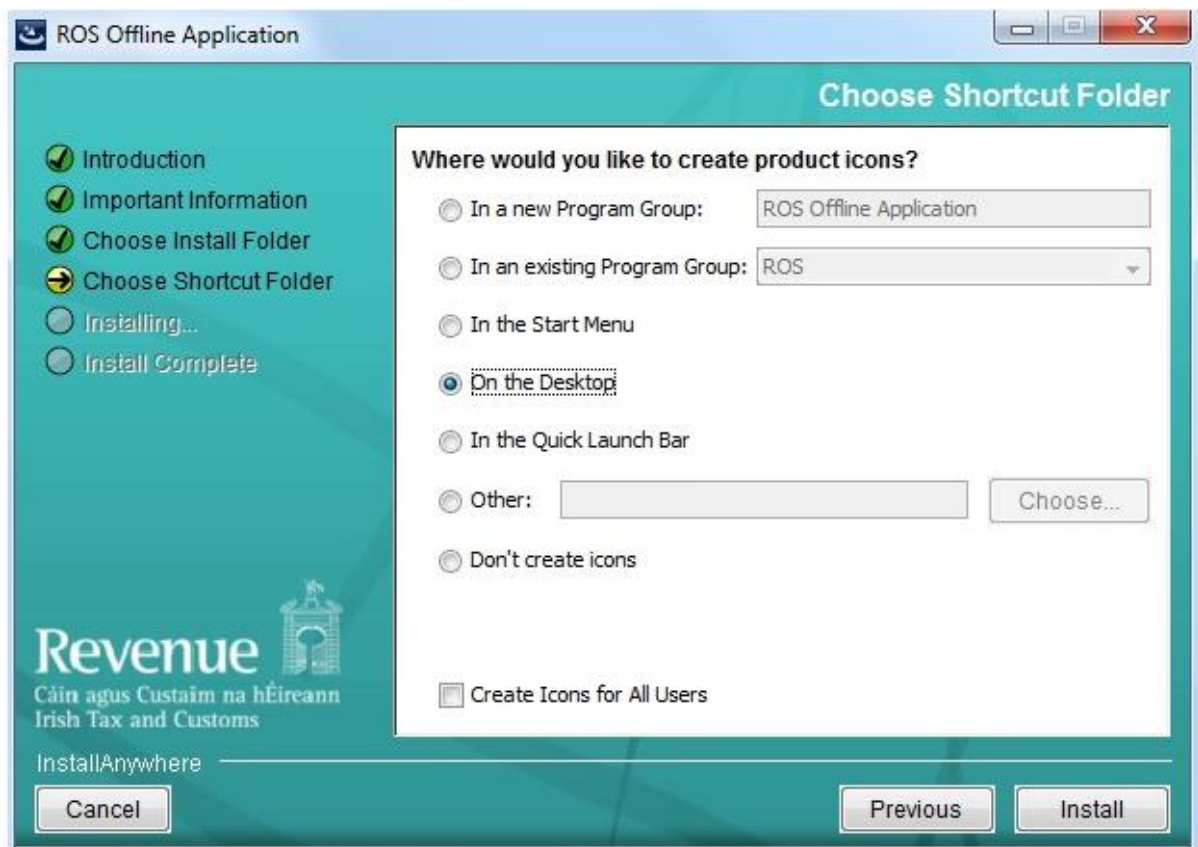


Under the option "Where Would You Like to Install", the default installation is set to "C:\ros\offline". We would not advise changing this default location.

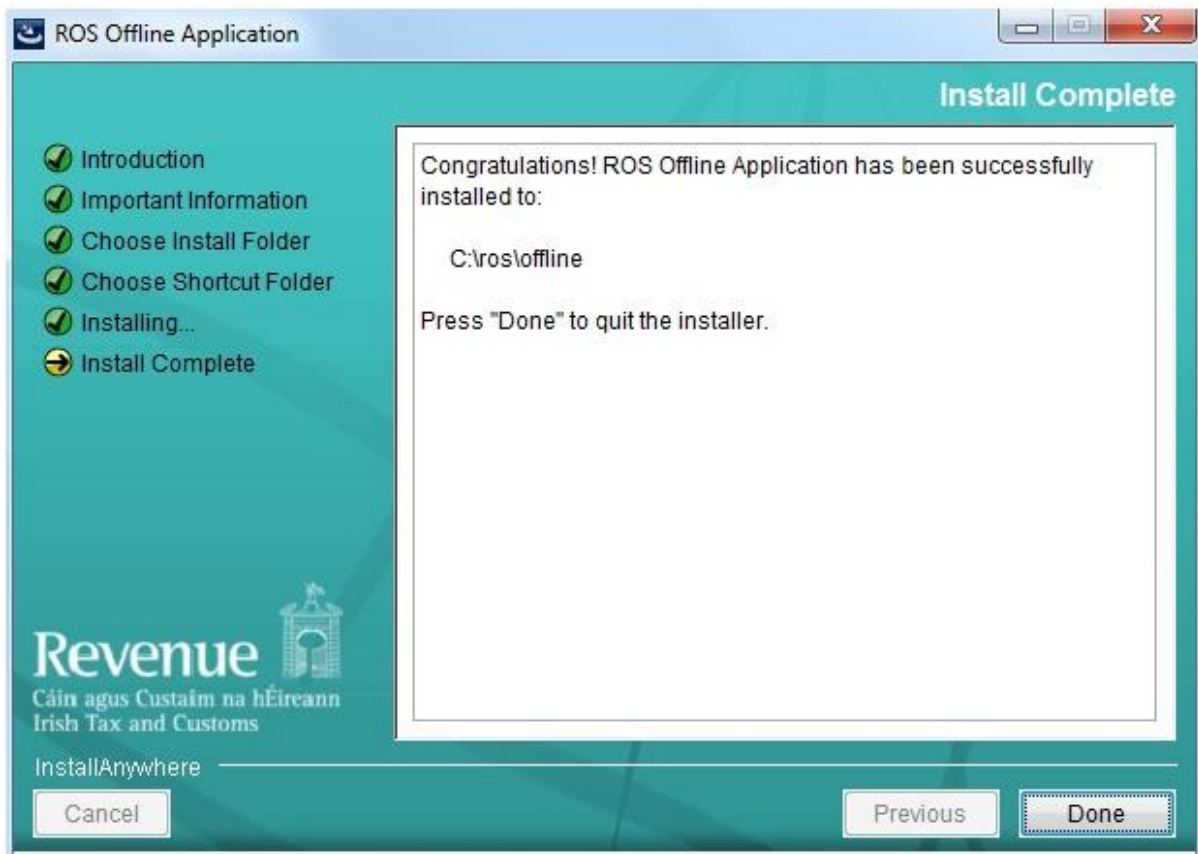
Click "**Next**" to continue onto the next screen.



On the Choose Shortcut Folder screen select "**On the Desktop**" for easy access and click "**Install**".



Installation is now complete. Click "**Done**".



Go to your desktop and double-click on the ROS Offline icon to start the application.

For further information on downloading/completing forms, please review the "**Using ROS Offline Application**" section.